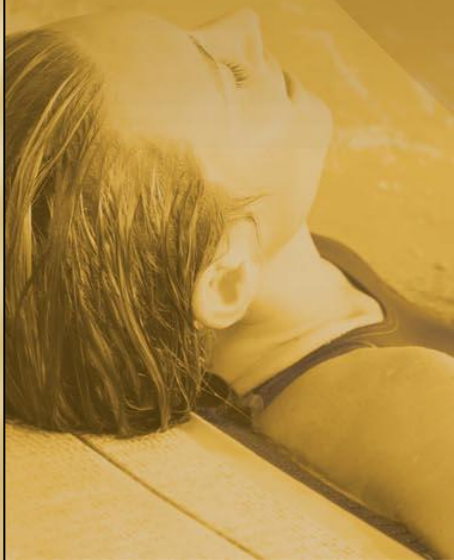
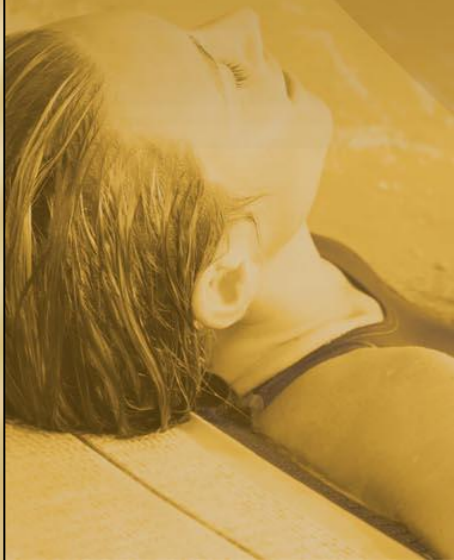


*NEW-
SPA SYNERGY*



SOME BACKGROUND

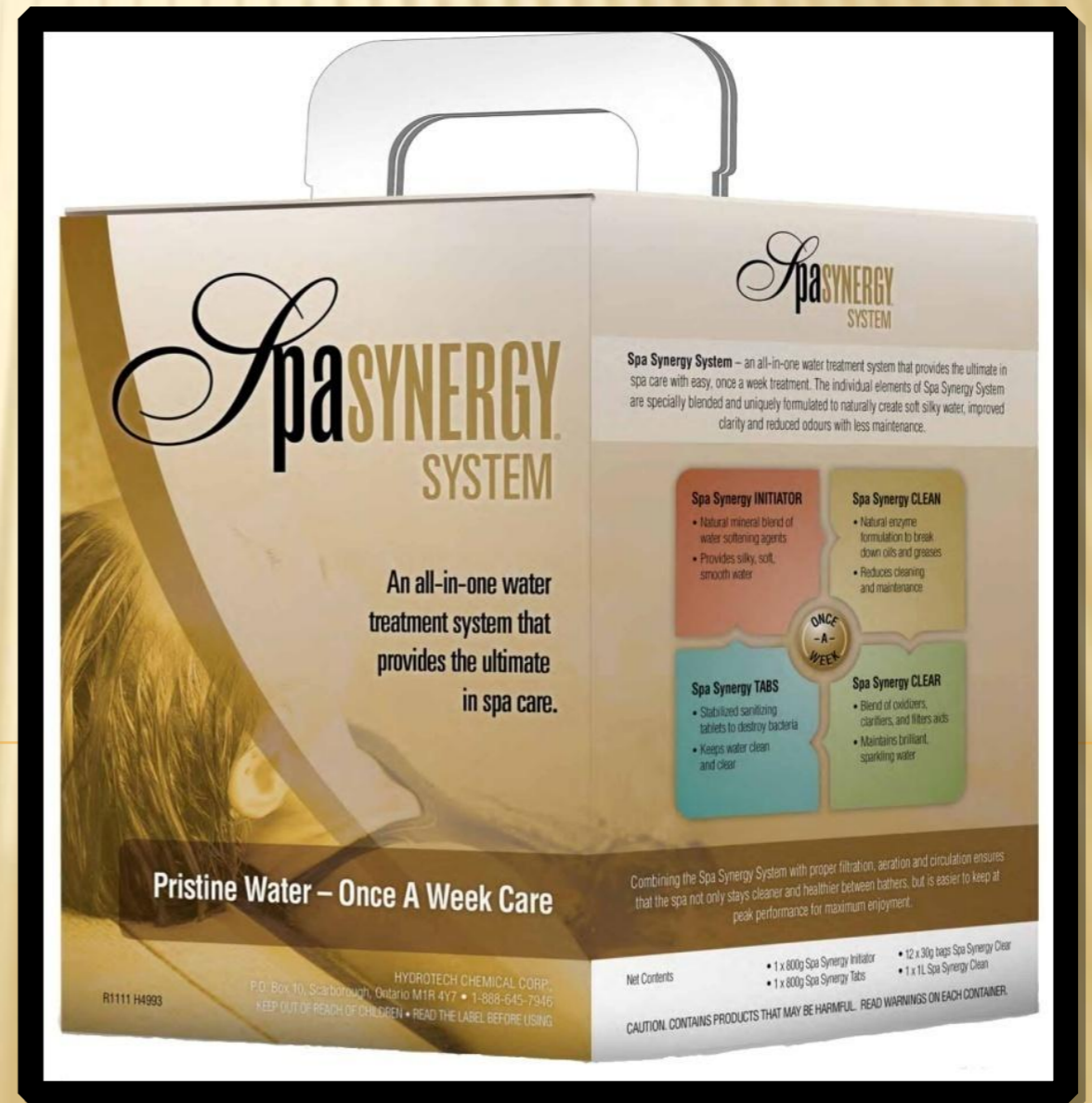
- **Spa Synergy sold in Canada for many years**
- **Consists of 4 products (Initiator, Tabs, Clear & Clean)**
- **Trusted, proven technology**
- **Provides better results for spa owners because it is a system**





SPA SYNERGY SYSTEM

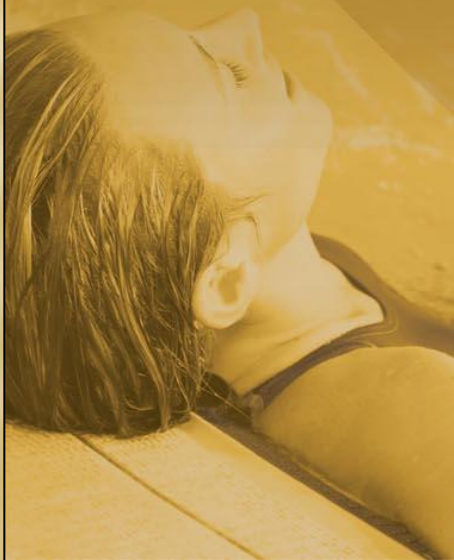
Proven technology meets a better presentation to the consumer



SPA SYNERGY SYSTEM

Synergy Initiator

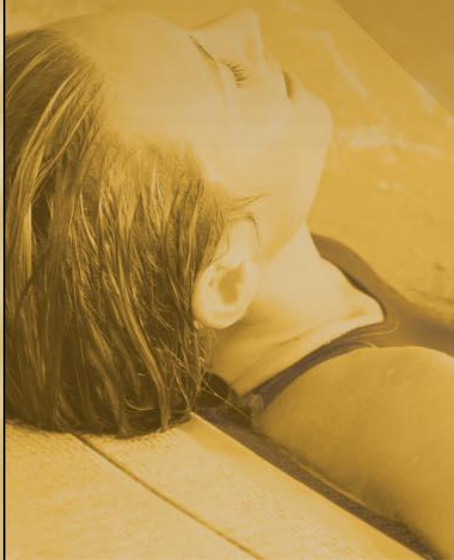
- **800 gm bottle**
- **Boron technology**
- **Rapid dissolving**
- **Provides soft, silky, smooth water**
- **Helps buffer and stabilize pH**
- **Helps enhance chemical efficiency**
- **Start up and weekly application**



SPA SYNERGY SYSTEM

Synergy Tabs

- **800 gm bottle**
- **20gm tabs - 3gm per 1000L/day**
- **Blended Tablet (Boron)**
- **Once a week application**



SPA SYNERGY SYSTEM

Synergy Clear

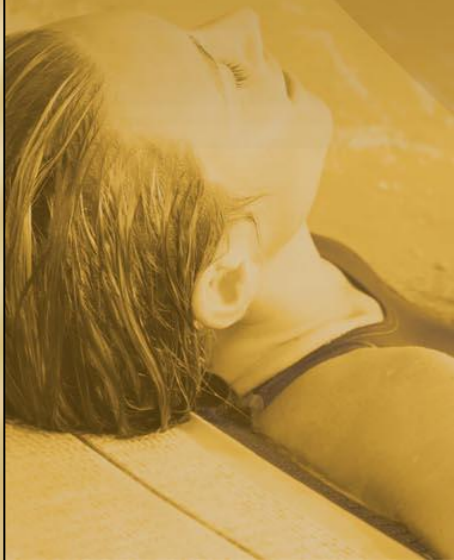
- **12 x 30gm bags**
- **Multi-function oxidizer, clarifier and buffer**
- **Oxidize 1500L or less**
- **15 minute soak time**
- **One bag per week or after heavy use.**
- **Leave cover off 1hr**



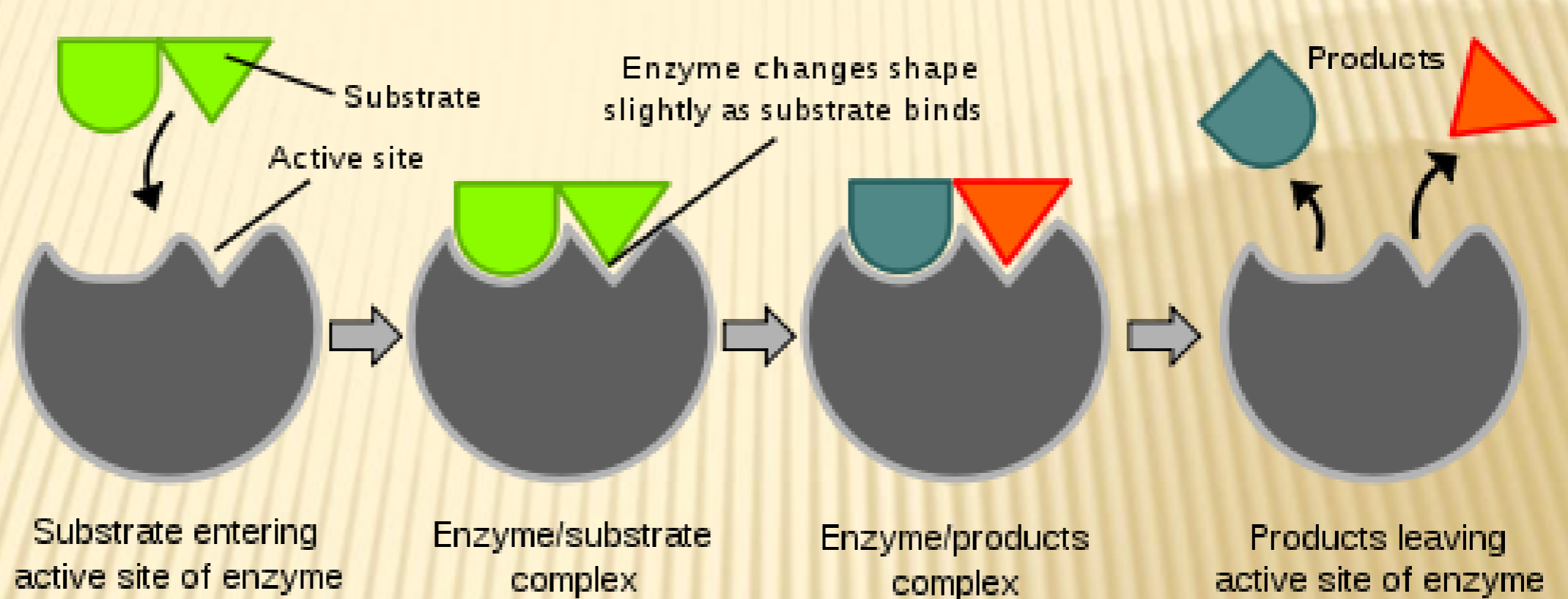
SPA SYNERGY SYSTEM

Synergy Clean

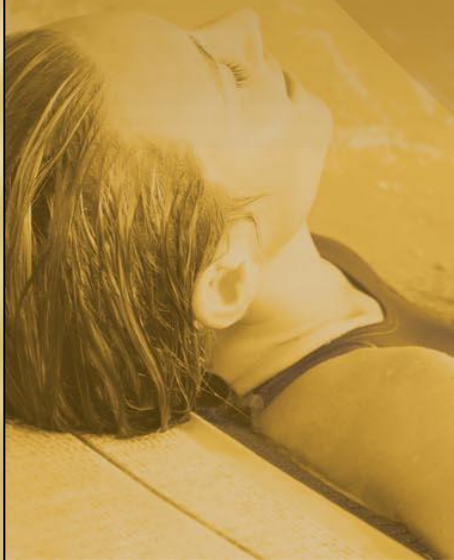
- **Natural Enzyme formulation that breaks down oils and greases**
- **Reduces cleaning and maintenance**
- **Shake before use**
- **Once a week application.**
- **Add one day after Synergy Clear**
- **May get slight foaming**



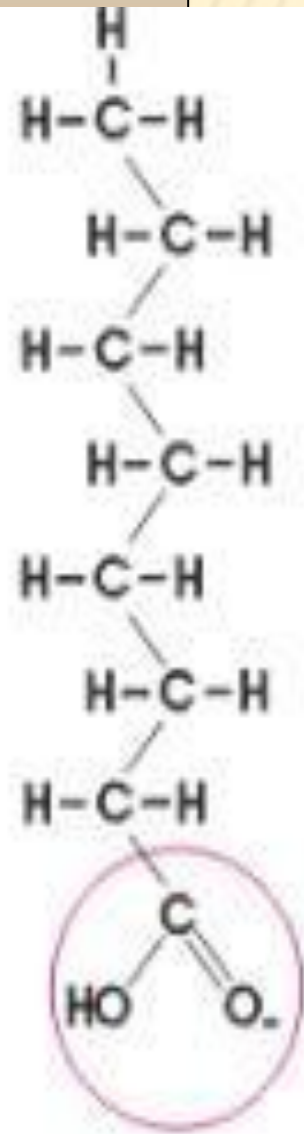
ENZYMES



Enzyme: A protein that catalyzes chemical reactions of other substances without itself being destroyed or altered upon completion of the reactions.



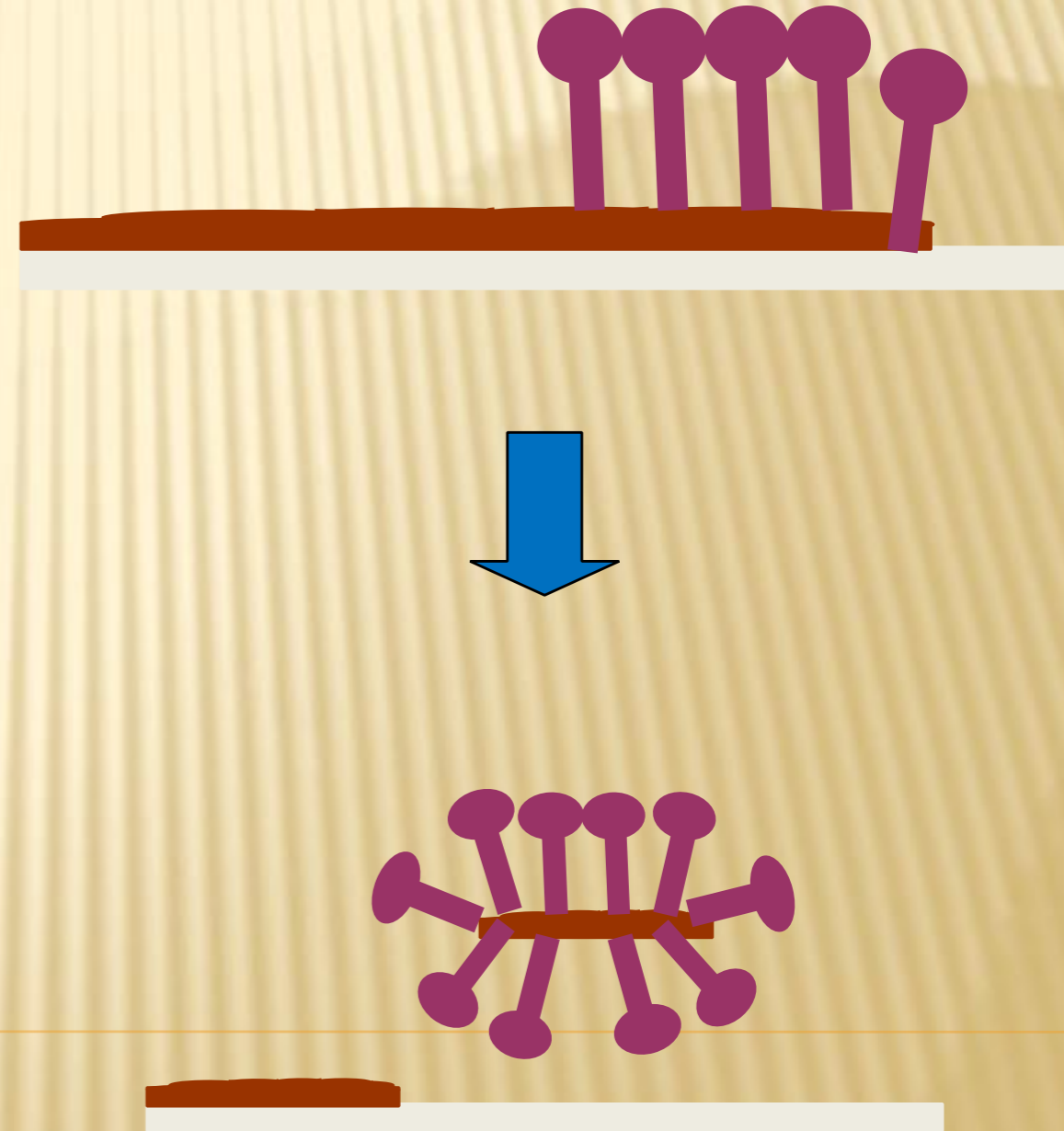
SURFACTANTS



Non-polar "R" Group
(Hydrophobic)

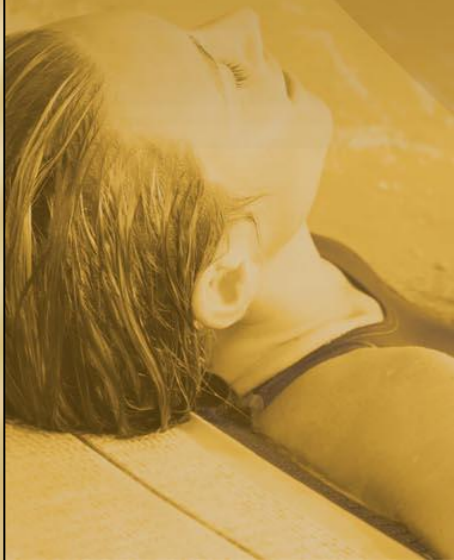
Polar Group
(Hydrophilic)

©2005 D-Foam, Inc. All rights reserved.



SPA SYNERGY SYSTEM

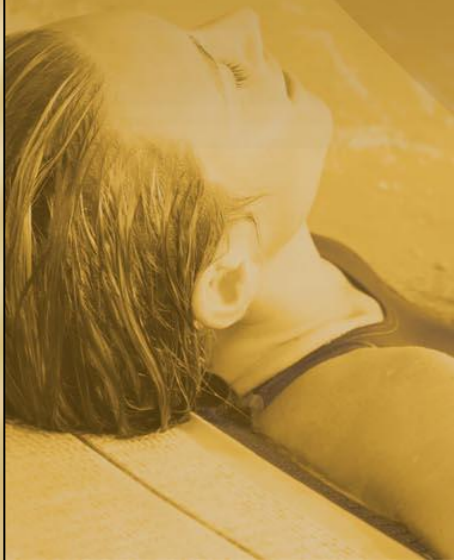
- **Supplemental chlorine**
 - **SpaGuard Chlorine Concentrate as needed**
- **Need stain and scale products**
- **Need to balance as normal**
- **Can use all ancillary products**



MARKET CONDITIONS

SPA OWNER WANTS...

- **easy, simple, routine**
- **clean, clear, soft, silky**
- **efficacy**
- **value**



SpaSYNERGY
SYSTEM



SpaSYNERGY SYSTEM

An all-in-one water
treatment system that
provides the ultimate
in spa care.

Pristine Water – Once A Week Care

R1111 H4993

HYDROTECH CHEMICAL CORP.
P.O. Box 10, Scarborough, Ontario M1R 4Y7 • 1-888-645-7946
KEEP OUT OF REACH OF CHILDREN • READ THE LABEL BEFORE USING

SpaSYNERGY
SYSTEM

Spa Synergy System – an all-in-one water treatment system that provides the ultimate in spa care with easy, once a week treatment. The individual elements of Spa Synergy System are specially blended and uniquely formulated to naturally create soft, silky water, improved clarity and reduced odours with less maintenance.

Spa Synergy INITIATOR

- Natural mineral blend of water softening agents
- Provides silky, soft, smooth water

Spa Synergy CLEAN

- Natural enzyme formulation to break down oils and greases
- Reduces cleaning and maintenance



Spa Synergy TABS

- Stabilized sanitizing tablets to destroy bacteria
- Keeps water clean and clear

Spa Synergy CLEAR

- Blend of oxidizers, clarifiers, and filters aids
- Maintains brilliant, sparkling water

Combining the Spa Synergy System with proper filtration, aeration and circulation ensures that the spa not only stays cleaner and healthier between bathers, but is easier to keep at peak performance for maximum enjoyment.

Net Contents

- 1 x 800g Spa Synergy Initiator
- 1 x 800g Spa Synergy Tabs

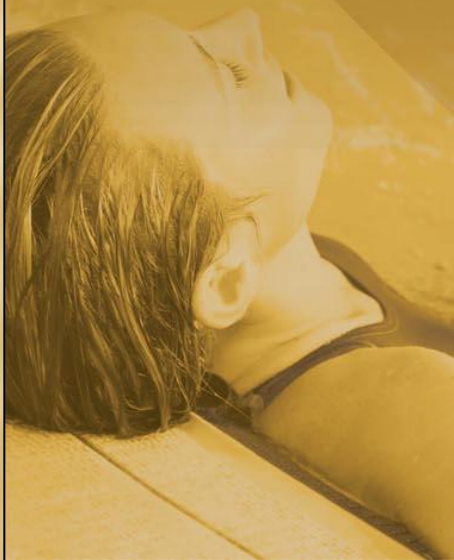
- 12 x 30g bags Spa Synergy Clear
- 1 x 1L Spa Synergy Clean

CAUTION. CONTAINS PRODUCTS THAT MAY BE HARMFUL. READ WARNINGS ON EACH CONTAINER.



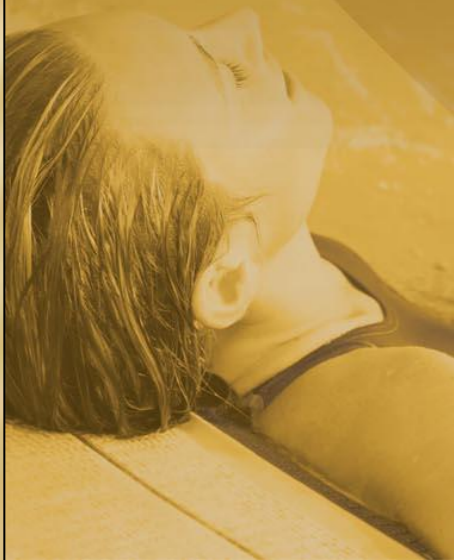
SPA SYNERGY SYSTEM

An all-in-one water treatment system that provides the ultimate in spa care .



Spa Synergy INITIATOR

- Natural mineral blend of water softening agents
- Provides silky, soft, smooth water



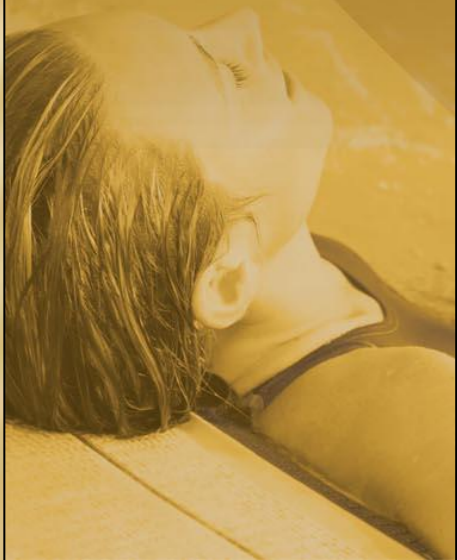
Spa Synergy INITIATOR

- Natural mineral blend of water softening agents
- Provides silky, soft, smooth water

Spa Synergy CLEAN

- Natural enzyme formulation to break down oils and greases
- Reduces cleaning and maintenance

ONCE
-A-
WEEK



Spa Synergy INITIATOR

- Natural mineral blend of water softening agents
- Provides silky, soft, smooth water

Spa Synergy CLEAN

- Natural enzyme formulation to break down oils and greases
- Reduces cleaning and maintenance

ONCE
-A-
WEEK

Spa Synergy TABS

- Stabilized sanitizing tablets to destroy bacteria
- Keeps water clean and clear



Spa Synergy INITIATOR

- Natural mineral blend of water softening agents
- Provides silky, soft, smooth water

Spa Synergy CLEAN

- Natural enzyme formulation to break down oils and greases
- Reduces cleaning and maintenance

ONCE
-A-
WEEK

Spa Synergy TABS

- Stabilized sanitizing tablets to destroy bacteria
- Keeps water clean and clear

Spa Synergy CLEAR

- Blend of oxidizers, clarifiers, and filters aids
- Maintains brilliant, sparkling water





MARKET POSITIONING

Great water quality

Proven and sound technology

Simple routine application

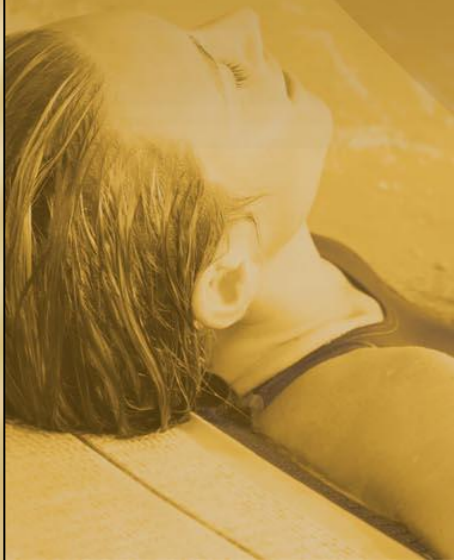
4 kits per year



MARKET POSITIONING

Who are we targeting?

- New Hot Tubs sales
- Walk in new customers
- Customers having issues with current system or feel current system is cumbersome



START UP PROCEDURES

- 1. Add 1 bottle of Stain & Scale Control 1**
- 2. Add 40ml Stain & Scale Control**
- 3. Add 225gm Synergy Initiator**
- 4. Add 1 bag Synergy Clear**
- 5. Add 2 tablets to basket or Floating Chlorinator. Ensure to test regularly**
- 6. Next day add 120 ml Synergy Clean**
- 7. Bring in water sample**



WEEKLY PROCEDURES

- 1. Check chlorine and add tablets to basket or floater.**
- 2. Oxidize/Shock spa with 1 bag Synergy Clear**
- 3. Add 25ml Stain & Scale**
- 4. Add 45gm Synergy Initiator**
- 5. Next day add 120 ml Synergy Clean**



MONTHLY PROCEDURES

- 1. Clean filter with 1 bag Filter Brite**
- 2. Bring in 1L sample**

